

HOW TO USE ...

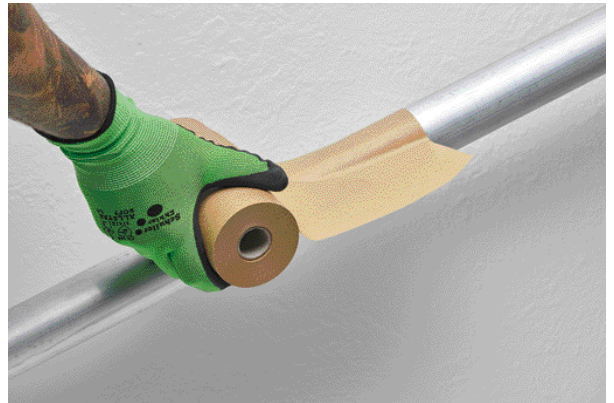
PAPER PROTECT

46003 (150mmx50m), 46005 (300mmx50m)



Ceiling light

PAPER PROTECT can be applied to any surface by means of an adhesive backing. After the work is finished, the kraft paper can be removed without leaving any residue. Eh'klar!



Handrail

The natural brown PAPER PROTECT consists of a robust, tear-resistant kraft paper, which is coated on one side with a special adhesive that is extremely gentle on the substrate.